

mobility Sports

PLEASE READ THIS INSTRUCTION MANUAL
THOROUGHLY BEFORE USING THIS
PRODUCT AND SAVE IT FOR FUTURE USE.



USER MANUAL

Thank you for purchasing equipment from Mobility Sports LLC. To ensure proper operation, please read this instruction manual thoroughly before using. Also, when undertaking maintenance, inspection or repair work, be sure to refer to this manual. If you have any questions regarding our products, please contact us 260.338.2276, or visit our website www.mobilitysports.com.

LEGAL DISCLAIMER:

Mobility Sports LLC will not be held liable for any incidental or consequential damages for breach of any expressed or implied warranty of our equipment, nor an incidental or consequential damages from the inability to use, or ability to use our products. Under no circumstance shall Mobility Sports LLC, liability exceed the purchase price of the product as sold by Mobility Sports LLC. Mobility Sports LLC reserves the right to refuse to honor this warranty if any of above exceptions caused the product design and/or structural integrity to fail.

All players using Mobility Sports LLC equipment assume all risk associated with using our products. When using Mobility Sports LLC equipment, user must wear all protective gear as required by USA Hockey.

COPYRIGHT:

All of the information found on the www.mobilitysports.com is copyrighted by Mobility Sports LLC. All rights reserved. All U.S. and International patent and trademark infringement/misuse will be prosecuted to the fullest extent of the law. This includes violations of infringements of design, manufacturing, concept or utility patents currently covered or pending patents to be issued. Any and all trademarks, representations, and copyrights are trademark of their respective owners.

WARRANTY:

Mobility Sports LLC warrants our products (with the exception of carbon fiber and composite sticks) against defect in workmanship and materials for a period of 90 days from the original date of purchase. If Mobility Sports LLC determines the product is defective, subject to the limitations of this warranty, it will be replaced at no charge, excluding shipping, for labor and/or materials.

Mobility Sports LLC warrants our sticks; wood, 100% carbon fiber and composite, against defect in workmanship and materials for a period of 30 days from the original date of purchase. If Mobility Sports LLC determines the product is defective, subject to the limitations of this warranty, it will be replaced at no charge, excluding shipping.

Dear Valued Customer,

I would like to personally thank you for your business and support. We here at Mobility Sports LLC take great pride in our products and we are delighted to have you as a customer. Without you we would not be where we are as a company today. We value all the opinions and suggestions from our customers.

As you will see on the following pages, assemblies of our products are very self-explanatory and can be completed in a very timely manner. However, if you experience any difficulty please contact us 260.338.2276 or www.mobilitysports.com and we will do our best to resolve your issue.

Again, thank you for your business and we hope you are a customer for many years to come.

Sincerely,

Randal J Kwapis

Randal J Kwapis
President Mobility Sports LLC

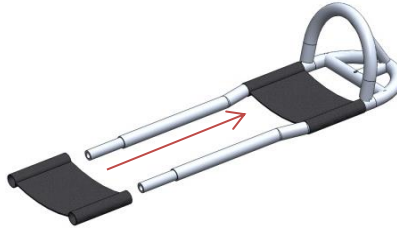
ASSEMBLY:

TOOLS NEEDED:

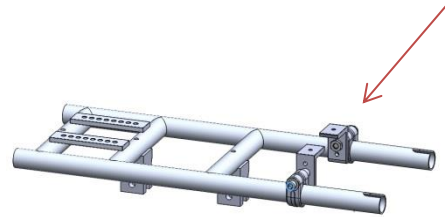
- 7/16-inch wrench
- 1/2-inch wrench
- 3/16-inch allen wrench
- 5/32-inch allen wrench
- 1/4-inch allen wrench

ASSEMBLE SLED:

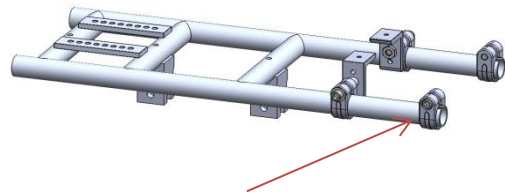
1. Slide Foot Rest over tubes.



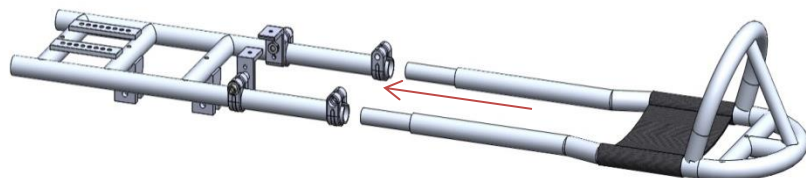
2. Attach **Bucket Stabilizer Assembly**. **PLEASE NOTE BUCKET STABILIZER IS NOT USED WITH X-SMALL (10-INCH) BUCKET.**



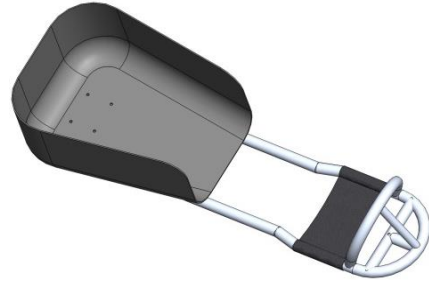
3. Attach bicycle style clamps to slotted ends of tubes. To minimize contact between the clamps and the ice, it is recommended the clamps be oriented as shown.



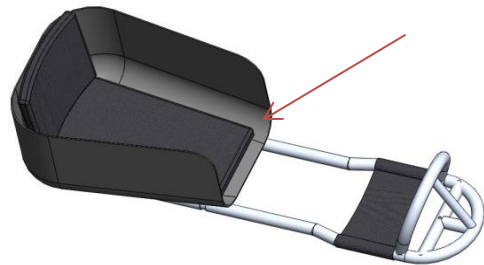
4. Attach and then Slide smaller sized tubing into side tubes and loosely tighten bicycle style clamps with 1/4-inch allen wrench.



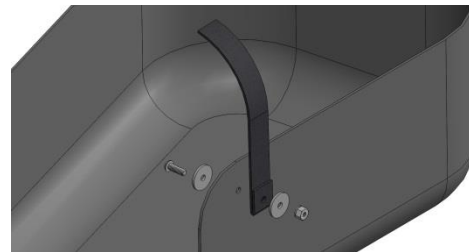
-
5. Attach bucket using 5/32-inch allen wrench and four 1/4-inch button head bolts with fender washers and 7/16-inch lock nuts.



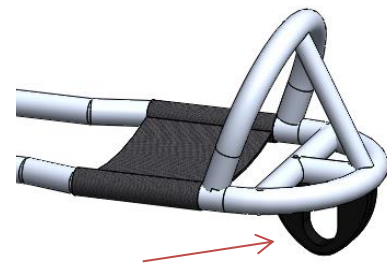
6. Attach Thermal Bottom and Back using provided Velcro. Attach optional hip pads, at this time, using provided Velcro.



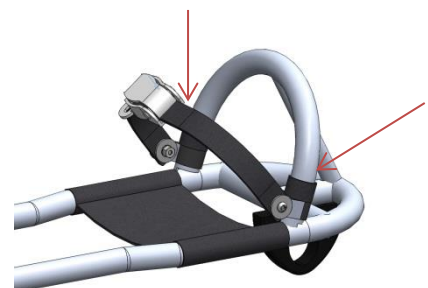
7. Attach Team Strap Kit following this example for each strap, using provided hardware and a 5/32-inch allen wrench and a 7/16-inch wrench. **TO MINIMIZE PREMATURE STRAP FAILURE, MAKE SURE BUTTON HEAD BOLT GOES THROUGH BOTH STRAP HOLES.**



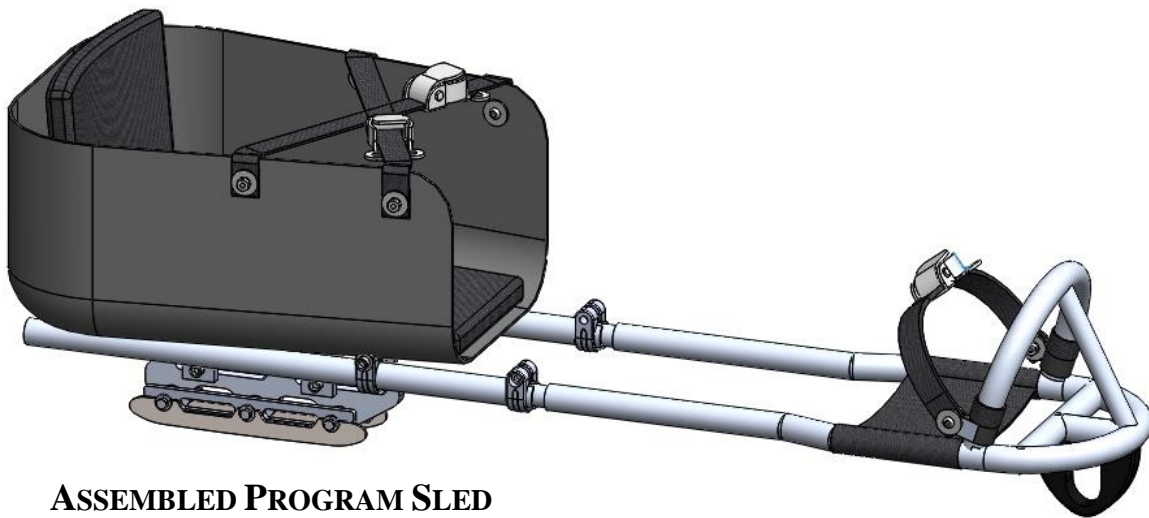
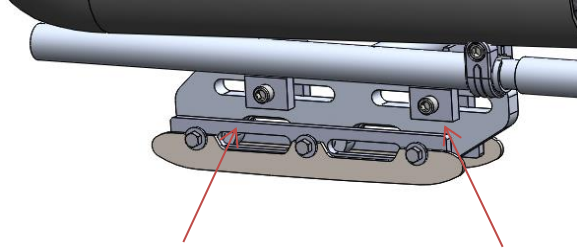
8. Attach Skag (Nylon shown, U-Bolt standard) to front of sled, using 1/2-inch wrench and 2 supplied nuts.



9. Attach Ankle strap using supplied clamps, nuts and bolts. To keep strap from sliding up, we recommend wrapping stick tape above the clamp.



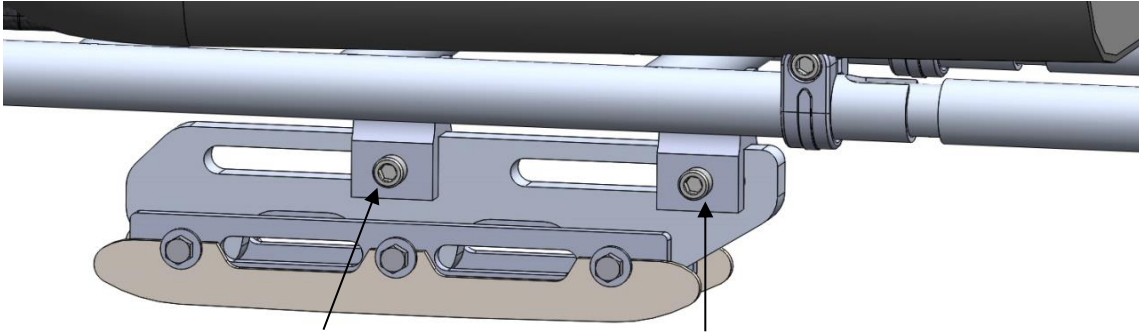
-
10. Attach **Blade Assembly** to sled frame using 1/4-inch allen head bolts and 1/2-inch nuts and loosely tighten bolts. Prior to first use bolts must be firmly tightened to keep blade assembly from moving while sled is in use.



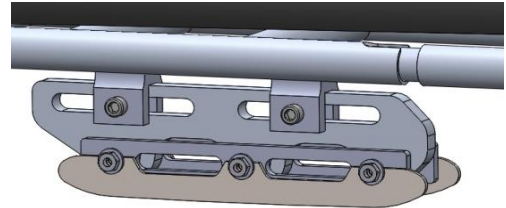
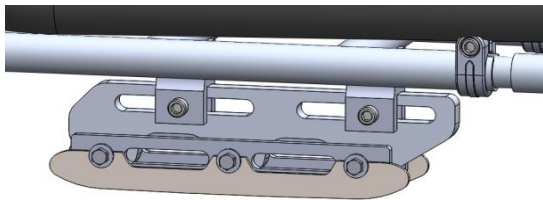
ASSEMBLED PROGRAM SLED

ADJUST SLED FOR USE:

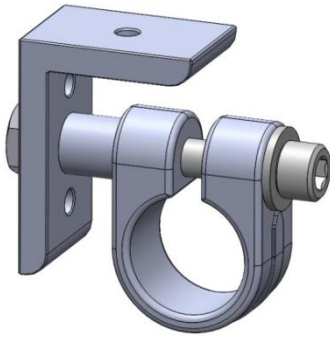
1. With player sitting in sled, adjust length of sled so players feet are resting on footrest with a slight bend at the knee securely tighten bicycle style clamps with 1/4-inch allen wrench.



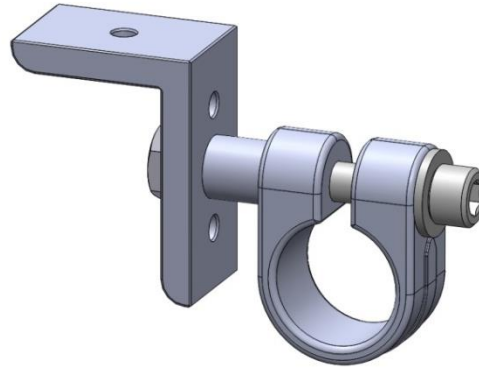
2. To achieve proper position of blade assembly:
 - a. With player sitting in sled on hard surface, move blade assembly to the rear and then move it slowly forward until front of sled lifts off the surface. Tighten bolts using a 1/4-inch allen wrench and a 1/2-inch wrench.
 - b. Please note: For beginning players, the sled will be most stable with the blades in the rear position as shown above.
 - c. **NOTE: BY POSITIONING SHARPLY ANGLED END OF BLADE ASSEMBLY TOWARD THE FRONT OF THE SLED; AS SHOWN BELOW, YOU CAN MOVE THE BLADES APPROXIMATELY 1-INCH FURTHER TO THE REAR AND BY POSITIONING THE SHARPLY ANGLED END TOWARD THE REAR OF THE SLED YOU CAN POSITION THE BLADES APPROXIMATELY 1-INCH FURTHER FORWARD.**



BUCKET STABILIZER:



COMPETITION SLED CONFIGURATION



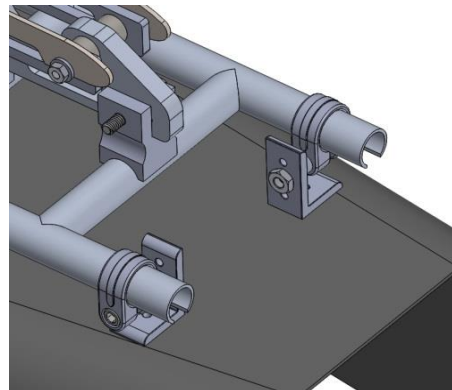
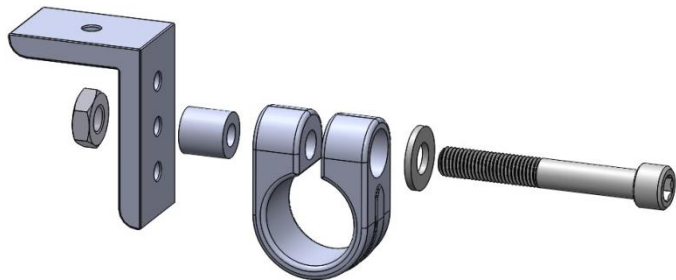
PROGRAM SLED CONFIGURATION

TOOLS NEEDED:

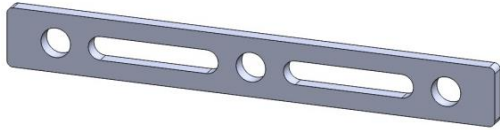
- 7/16-inch wrench
- 3/16-inch allen wrench
- 5/32-inch allen wrench

MOUNTING INSTRUCTIONS:

1. Using the contents of the Bucket Stabilizer bag, assemble Stabilizer using the configuration of sled you are assembling.
2. Slide the bucket stabilizer onto the frame of the sled.
3. Position bucket so holes in back and front of the bucket line up and the bucket is square to the frame and then attach bucket with 1-inch button head screws and 7/16-inch nuts (**labeled Seat Bolts**) Securely tighten all nuts and bolts.
 - A. **NOTE: BUCKET STABILIZER IS INTENDED TO STABILIZE THE FRONT OF THE BUCKET AND NOT CREATE DUMP.**
 - B. **PLEASE NOTE BUCKET STABILIZER IS NOT USED WITH X-SMALL (10-INCH) BUCKET.**



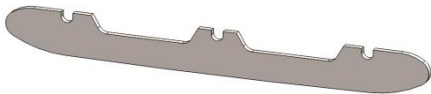
BLADE ASSEMBLY:



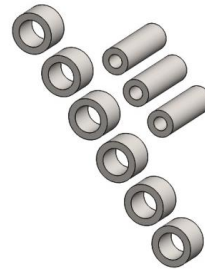
Blade Backer Qty. 2



Blade Holder Qty. 1



Blade Qty. 2



Spacer Kit – shafts (3) and spacers (6)

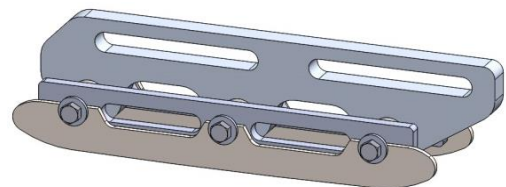
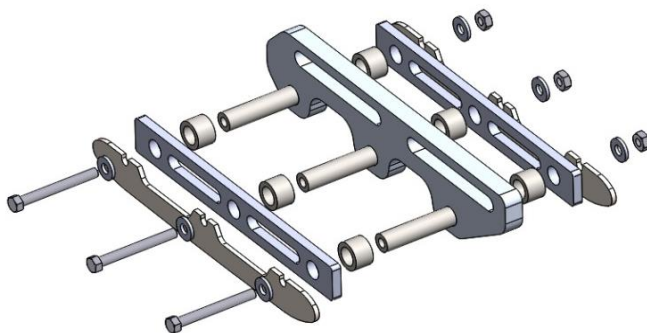
TOOLS NEEDED:

7/16-inch wrench two (2) needed

CAUTION, BLADES ARE EXTREMELY SHARP, WEAR PROTECTIVE GLOVES AND USE CAUTION WHENEVER MAKING ADJUSTMENTS TO OR NEAR THE BLADE ASSEMBLY.

All Team Sleds come standard with 4-inch, 3-inch, 2-inch and 1-inch spacer kits, allowing teams to adjust blade width as player skills advance.

Optional spacer kits starting at 1/2-inch are available for purchase from www.mobilitysports.com



BLADE ASSEMBLY: 4-INCH BLADE SPACING:

1. Insert three (3) 4-inch spacer shafts into blade holder
2. Slide six (6) of the 1-inch (red) spacers, and six (6) of the 1/2-inch (blue) spacers, over the spacer shafts
3. Slide backer plate up against colored spacers
4. Attach blades, using three (3) 4-3/4 inch bolts, washers and lock nuts

BLADE ASSEMBLY: 3-INCH BLADE SPACING:

1. Insert three (3) 3-inch spacer shafts into blade holder
2. Slide six (6) of the 1-inch (red) spacers, over the spacer shafts
3. Slide backer plate up against colored spacers
4. Attach blades, using three (3) 3-3/4 inch bolts, washers and lock nuts

BLADE ASSEMBLY: 2-INCH BLADE SPACING:

1. Insert three (3) 2-inch spacer shafts into blade holder
2. Slide six (6) of the 1/2-inch (blue) spacers, over the spacer shafts
3. Slide backer plate (up against colored spacers
4. Attach blades, using three (3) 2-3/4 inch bolts, washers and lock nuts

BLADE ASSEMBLY: 1-INCH BLADE SPACING:

1. Insert three (3) 1-inch spacer shafts into blade holder
2. Slide backer plate up against blade holder
3. Attach blades, using three (3) 1-3/4 inch bolts, washers and lock nuts

PUSHER HANDLE (OPTIONAL):

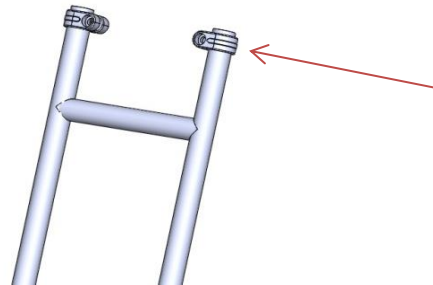


TOOLS NEEDED:

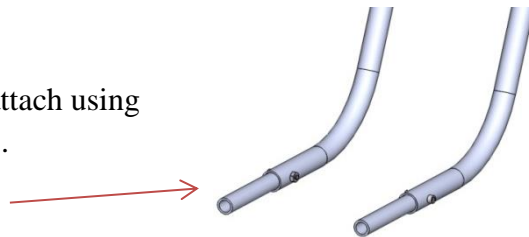
- 7/16-inch wrench two (2) needed
- 1/4-inch allen wrench

PUSHER HANDLE ASSEMBLY AND USE:

1. Attach bicycle style clamps to end of tubes.



2. Insert 4-inch tubes into end of tubes and attach using provided 1/4-20 x 1-1/4 inch bolts and nuts.



3. Slide smaller sized tubing into side tubes and loosely tighten bicycle style clamps with 1/4-inch allen wrench.

4. Slide Pusher Handle in to the rear of the sled. (seat removed for clarity)

5. Adjust height of pusher handle and tighten bicycle style clamps.

6. Pusher handle is designed to push the sled, it is possible when attempting to pull the sled, with a player seated; the handle may disengage from rear of sled.

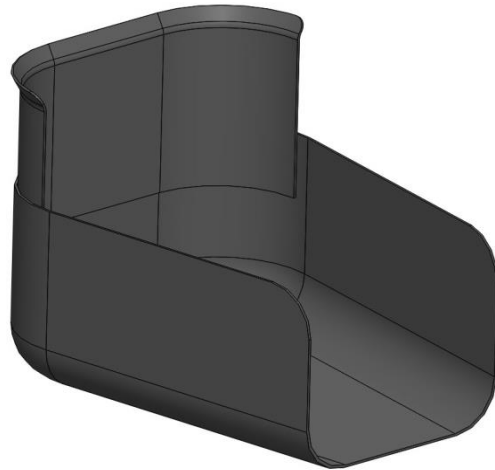
To minimize this, push down slightly on the handle when pulling.



BOLT-ON HIGH BACK (OPTIONAL):

TOOLS NEEDED:

7/16-inch wrench
5/32-inch allen wrench
Drill with 5/16-inch drill bit (if bucket and back
have not been pre-drilled)



MOUNTING INSTRUCTIONS:

1. Position the high back about 4- inches into the bucket. Make marks indicating where holes must be drilled.
 - a. **NOTE: WE RECOMMEND DRILLING HOLES IN A DIAMOND PATTERN. ALSO MAKE SURE MARKING UTENSIL IS ABLE TO BE SEEN ON THE BUCKET.**
2. Remove high-back and use 5/16-inch drill bit to drill holes where previously indicated.
3. Reinsert high-back in same location as before and this time mark on the bucket as to where holes should be drilled.
4. Remove high-back to drill holes in bucket then reinsert into bucket to ensure that the holes match.
5. Secure tightly with provided bolts, nuts and washers.

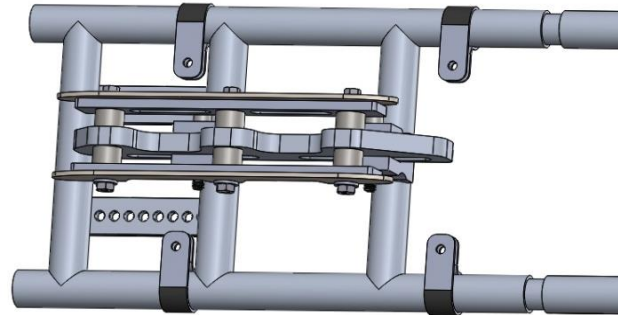
ANTI-TIPPER (OPTIONAL):

TOOLS NEEDED:

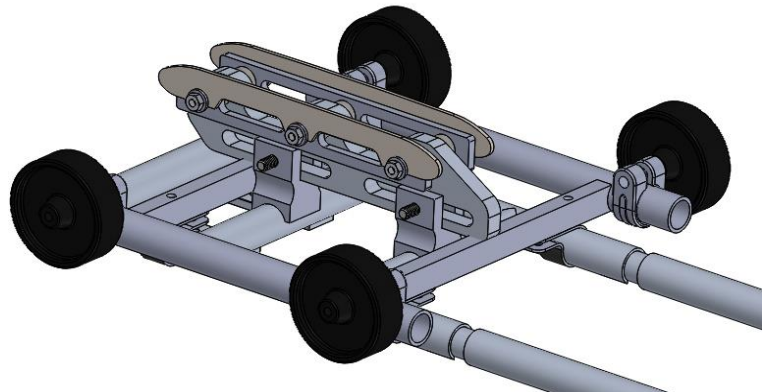
- 7/16-inch wrench
- 5/32-inch allen wrench
- 1/4-inch allen wrench

MOUNTING INSTRUCTIONS:

1. For ease of attaching anti-tippers, it is recommended that the bucket and blade assembly be removed.
2. Position provided vinyl covered clamps.



3. Position anti-tipper frame as shown and attach with provided hardware.
4. Reattach blade assembly and bucket.



NOTES:

**WHEELS ARE INTENDED TO SLIDE ON THE ICE AND DO NOT ROTATE.
MAKE SURE TO TIGHTEN WHEELS FIRMLY IN A VERTICAL POSITION.
BY ANGLING WHEELS, USER WILL BE ABLE TO TIP FROM SIDE TO SIDE.**

TIPS AND MAINTENANCE:

- **Applying a small amount of lubricating oil such as 3-IN-ONE on the small tubes of the nose piece will allow it to more easily slide in and out.**
- **Before each use make sure all nuts and bolts are tight.**
- **OPTIONAL – Pre-sharpened blades are sharpened using ½” ROH**
- **OPTIONAL Padded Ratchet Strap (PRS) -- When installing a PRS, a standard nylon strap with cam buckle is mounted on the front of the bucket and the PRS is mounted in the rear.**